

PIASKARKA

Instrukcja obsługi 1001077



CE

PAMIĘTAJ, ŻE BEZPIECZEŃSTWO JEST NAJWAŻNIEJSZE!



INSTRUKCJA



OSTRZEŻENIE!

Przed zapoznaniem się z niniejszą instrukcją obsługi nie należy używać żurawia hakowego montowanego na widłach.

UWAGA!

Zachować na przyszłość.

Niniejsza instrukcja obsługi nie zastępuje zobowiązań prawnych firmy właściciela w zakresie bezpieczeństwa i higieny pracy. Właściciel i użytkownik ponoszą koszty wszelkich szkód lub obrażeń spowodowanych przez a nieprzestrzeganie informacji zawartych w niniejszej instrukcji obsługi.

Niniejszą instrukcję obsługi należy przechowywać w łatwo dostępnym miejscu dla personelu obsługującego

Operating Manual

Intended use

The spreader is intended to be filled with sand, salt or gravel which it will then empty out in a controlled manner. It is designed for use with an industrial truck.

As a forklift attachment, the spreader can be picked up and transported on the forks (tines) of an industrial truck, and then used to distribute the contents at an appropriate location.

Warnings



1. It is prohibited to lift or move the spreader with any industrial truck that has not been approved. This would pose a risk of damage and potentially life-threatening injuries to people.
2. The transporting of people is prohibited. This would constitute a danger to life.
3. Do not change the spreading quantity set during the spreading procedure.
4. Never allow the device to run with the slide valve closed as this would result in the spreading material being ground.
5. Do not drive for long distances with the hopper filled as this will result in the spreading material becoming compacted and this in turn can result in faults.

Commissioning

The spreader is supplied in a fully assembled condition and can enter service without any special commissioning process.

The hydraulic oil pump on the industrial truck must be able to supply at least 15 l/min. at a working speed of 6 km/h.

Industrial trucks with an oil pump delivery rate greater than 50 l/min. and a pressure of more than 175 bar are unsuitable for the attachment of the spreader.

Type plate

CE			
Typ	<input type="text"/>	ESP	<input type="text" value="560 mm"/>
Herstell-Nr.	<input type="text"/>	LSP	<input type="text" value="685 mm"/>
Baujahr	<input type="text"/>	Vorbaumaß	<input type="text" value="1230 mm"/>
Inhalt	<input type="text" value="265 Liter"/>	stapelbar	<input type="text" value="/"/>
Eigengewicht	<input type="text" value="115 kg"/>	hydr. Druck min.	<input type="text" value="/"/>
Tragfähigkeit	<input type="text" value="500 kg"/>	max.	<input type="text" value="175 bar"/>
Achtung: Tragfähigkeit der Kombination von Flurförderzeug und Anbaugerät einhalten!			

Operating Manual

04.02.2019 Page: 4/8

Behaviour in the event of faults	Check the spreader for damage, specifically mechanical damage, and if necessary notify the line manager or supervisor.
Information on noise pollution	The spreader causes no noise or noise pollution. Nevertheless, noise may occur while the spreader is being loaded/filled, and when being emptied. The level of noise depends on the kind of material involved. Where necessary, ear defenders should be worn as PPE.
Spare parts	<p>All details you need to obtain spare parts can be found in the spare parts list. We need the following details to be able to process your order rapidly:</p> <ul style="list-style-type: none">• our item number for each spare part• our item designation for each spare part• the order quantity• designation of skip, manufacturer's number and year of manufacture
Maintenance/ repairs	<p>Always keep the spreading discs and feed plates clean - clean thoroughly after use. Oil the slide valve regularly.</p> <p>Repairs to the forklift attachment must always be carried out by the manufacturer or by agents authorised by the manufacturer.</p> <p>Always use genuine spare parts.</p>
Inspection	Forklift attachments must be inspected by a qualified person at intervals defined by the owner in accordance with his/her risk assessment (German industrial safety regulations (BetrSich) sections 10 and 11). All inspections must be documented. If faults are identified on the spreader attachment, it must be taken out of operation immediately.
Inspection before first commissioning	Before using for the first time, the owner must check the forklift attachment to ensure that it complies with the version that was ordered and that the full scope of delivery has been supplied. A visual inspection must be carried out by a qualified person as part of commissioning.
Regular inspections	The user must check the forklift attachment for visible defects before each use. The owner must ensure that the forklift attachment is inspected regularly by a qualified person in accordance with the inspection intervals defined in his/her risk assessment, but at least one per year.
Extraordinary inspections	If an unusual incident occurs, a qualified person must carry out a special visual inspection of the forklift attachment outside the defined inspection intervals.
Inspection criteria	<p>Wear and proper function of the spreader</p> <p>Check for persistent deformations and corrosion that would impair functions or the loading capacity</p> <p>Presence of the eyebolt for locking the forklift's forks.</p>

Operating Manual

04.02.2019 Page: 5/8

Important information

The way in which the product is constructed and all provisions (standards, etc.) cited in the operating instructions refer to directives that are valid in Germany.

The product may only be used in other countries in accordance with the applicable directives, provisions and laws in the country of use.

Residual risks

Hazard to people and system caused by moving or lifting the spreader, and by activating the spreading process

Only ever move the spreader under direct visual supervision, or with a banksman. Observe the speeds of the industrial truck.

ONLY initiate the spreading operation after first checking to ensure that no-one is in the spreading area.



Crushing

When lifting the spreader, the control panel must be manned. Observe the 'industrial truck' safety instructions.

Lingering under a raised spreader is FORBIDDEN. Observe the 'industrial truck' safety instructions.



Working under loads

It is prohibited to stand behind a reversing vehicle.

Whenever possible, the vehicle should be guided by a banksman.

Hazard due to crushing, shearing when adjusting the spreading quantity, spreading vanes

It is prohibited to stand in the danger area during the spreading process. Maintain a safe distance.

Burns, chilblains and other injuries caused by contact with objects or materials at very high or very low temperatures

Always wear personal protective equipment (PPE).

Danger of burns caused by hot materials

Observe the cooling time and, if necessary, wear PPE.

Creation of sparks, a combustion hazard, caused by mechanical movements Never operate this spreader in EX-designated areas.

Hazard due to unsuitable local lighting

Never operate this spreader in poor lighting conditions or with insufficient visibility (fog).

Related to use with an industrial truck

Hazard from contact with or the inhalation of dangerous gases and vapours, with the risk of asphyxiation and poisoning

Operating Manual

04.02.2019 Page: 6/8

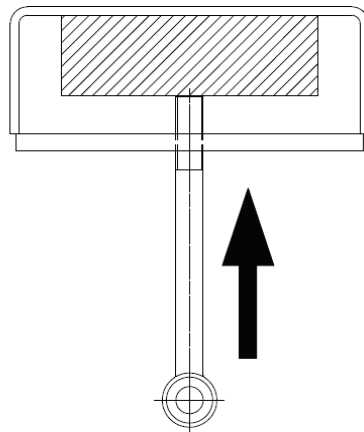
Various bodily injuries caused by being driven over

Breakage during operation

Regular inspection of guards and locking mechanisms, carried out at least once a year.

Moving or slipping of the spreader on the forks of an industrial truck, and toppling over of the industrial truck when picking up a spreader

Observe the safety instructions for the eyebolts!
Tighten both eyebolts firmly.



Observe the permitted load-bearing capacity of the industrial truck, and specifically of the ground surface and/or its gradient. Observe the 'Factory lift truck' safety instructions

Load-bearing capacity

The specified loading capacity of 500 kg is the maximum load, and must not be exceeded. Do not exceed the combined loading capacity of the industrial truck and attachment!

Personal protective equipment (PPE)

PPE is required to operate the spreader. Nonetheless, when carrying out cleaning work, appropriate PPE should be worn. Observe the safety instructions for the cleaning equipment!

Stability during operation

Set down the spreader only on level ground. There is a risk of it toppling over on sloped surfaces.

Disassembly, decommissioning and disposal

There are no particular requirements governing disassembly, decommissioning and disposal.

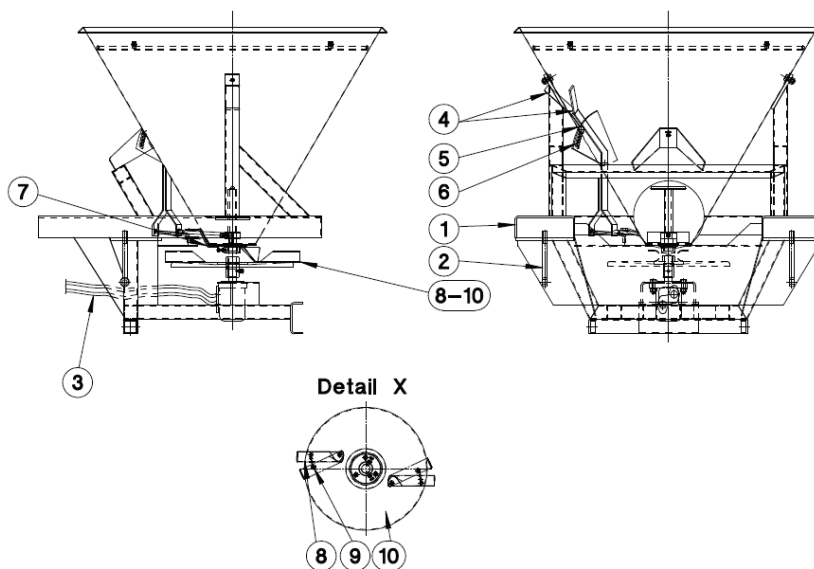
Safety instructions for storage

This spreader cannot be stacked!

Operating Manual

04.02.2019 Page: 7/8

Layout	Item	Name
	1	Fork pocket
	2	Eyebolt
	3	Hydraulic hoses
	4	Left and right lever
	5	Knurled screw with knurled nut
	6	Perforated plate
	7	Shut-off slide valve
	8	Spreading vanes
	9	Round-head screw with nut
	10	Spreading disc



Operation and control

1. The forklift's lifting mast must always be vertical.
2. Adjust the forks (tines) on the forklift to the distance between the forklift pockets. Insert the forks all the way into the fork pockets (1) on the spreader. Lift the forklift's lifting mast a little.
3. Tighten both eyebolts (item 2) firmly.
4. Connect the spreader's hydraulic hoses (item 3) to the forklift's hydraulic system.

Operating Manual

04.02.2019 Page: 8/8

5. Close the shut-off slide valve (item 7) before filling the hopper.
6. Fill with spreading material.
7. Start the spreading procedure by actuating the control unit on the forklift.
8. The spreading rate is set by adjusting the left and right levers (item 4). To do so, loosen the knurled screw (item 5) and the knurled nut, adjust the lever (item 4) with the perforated plate (item 6) and then lock again with the knurled screw (item 5) and knurled nut.
9. For single-sided spreading to the left or right, close the slide valve (item 7) on the opposite side.
10. If too much is being spread in the direction of travel, loosen the spreading vanes (item 8) by means of the round-head screw (item 9) and the nut, and turn back in the opposite direction to the spreading disc's (item 10) rotating direction. If too much is being spread to the left in the direction of travel, set the spreading vane (item 9) towards the spreading disc's (item 10) rotating direction (see detail X).
11. After the spreading process is complete, return the spreader to its parking position.
12. Release both eyebolts (item 2).
13. Remove the spreader's hydraulic hoses (item 3) from the forklift's hydraulic system.
14. Lower the forklift's lifting mast and pull the forks out of the fork pockets (item 1) by reversing the forklift.

Attention! The maximum hydraulic pressure of 175 bar must not be exceeded.



INSTRUKCJA

KARTA GWARANCYJNA

PIASKARKA

ref.: 1001077

Nr fabryczny:

Data sprzedaży:

Podpis i pieczęć punktu sprzedaży

Gwarancję przedłużono do dnia:

Podpis i pieczęć

Reklamacja może być uznana tylko za okazaniem kompletnie wypełnionej karty gwarancyjnej.

